

WHAT RESIDENTS CAN HELP WATCH FOR:

- Sediment leaving a construction site in stormwater.
- Spills (chemical, gas, oil)
- Illegal dumping activity into streams or storm sewers (please call 911 first).
- Dry weather flow from outfall pipes to streams (72 hours after a rain storm)

To report spills, dumping or discharges of pollutants into the street, stormwater system or streams, contact the following:

Chester StormWater Authority at
(610) 872-1000

Police Emergency at 911

Spills & Emergencies (PA DEP) at
(484) 250-5900

PA Fish Commission at
(717) 626-0228

**Sanitary Sewer Clogs, Leaks,
Overflows** at 911

Email us at
chesterstormwaterauthority@gmail.com

For more information, visit:

<https://www3.epa.gov/>

Department of Environmental
Protection (DEP)
www.depweb.state.pa.us

*This information has
Been Provided by the:*



Stormwater Authority of the City
of Chester

419 Avenue of the States

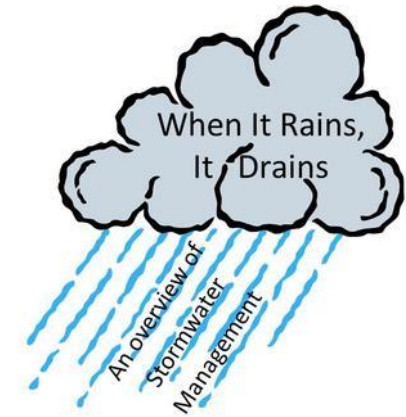
Chester, PA 19013

Office: 610-872-1000

Fax: 610-872-1003

Email:

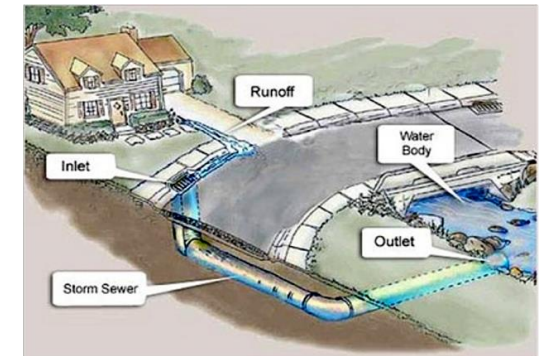
chesterstormwaterauthority@gmail.com



City of Chester

Residential Stormwater Management

*Understanding Storm Water and How It Can
Affect Your Money, Safety, Health, and the
Environment*

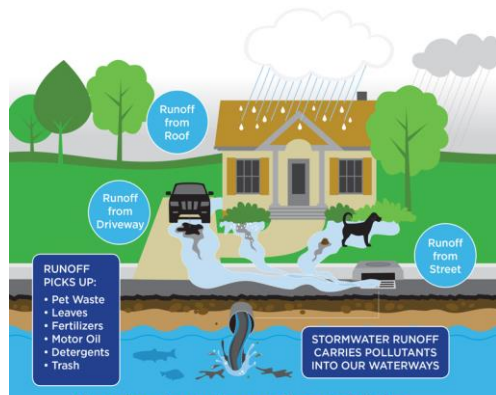


WHAT IS STORMWATER?

Stormwater is water from precipitation that flows across the ground and pavement when it rains or when snow and ice melt. The water seeps into the ground or drains into what we call storm sewers. These are the drains you see at street corners or at low points on the side of streets. Collectively, the draining water is called storm water runoff.

WHY IS STORMWATER "GOOD RAIN GONE WRONG?"

Stormwater becomes a problem when it picks up debris, chemicals, dirt, and other pollutants as it flows or when causes flooding and erosion of stream banks. Stormwater travels through a system of pipes and roadside ditches that make up storm sewer systems. It eventually flows directly to a lake, river, stream wetland, or coastal water. All of the pollutants stormwater carries along the way empty into our water, too, because stormwater does not get treated!



10 Ways To Prevent Stormwater Runoff Pollution:



Conserve Water by stopping faucet drips



Never dump anything down storm drains



Pick up after your pet



Sweep up driveways and sidewalks



Use fertilizers and pesticides sparingly



Plant gardens in bare spots



Direct rooftop runoff to grass or gardens



Check cars for leaks



Wash cars at the car wash



Compost your yard and organic wastes

THINGS TO HELP LIMIT STORMWATER RUNOFF VOLUME

Install a Rain Garden

A rain garden is a planted shallow depression designed to catch and filter rainfall runoff. The garden captures rain from a downspout or a driveway. The water sinks into the ground, aided by deep rooted plants that like wet and dry conditions. A residential rain garden should dry out between rains and should only hold water for approximately 24 hours. This timeframe prevents standing water that could create mosquito habitat.

Install a Rain Barrel

Rain barrels are installed at the bottom of your down-spouts and catch the rain water that comes off the roof. You can then reuse that water to water your garden or yard. Please try to empty your rain barrel between rain events to maximize the effectiveness of the rain barrel. You can either purchase your rain barrel from the Township or make your own.

Plant Trees and Shrubs

Planting trees, shrubs and/or plants that have a deep root structure help stormwater infiltrate into the ground. They also catch rain water on their leaves and branches which helps to reduce the amount of run-off during a storm